



**MOUNT NANSEN**  
REMEDiation LP 

# Mount Nansen Mine Remediation Project

Virtual Townhall

July 12, 2021

# *Today's Presentation*

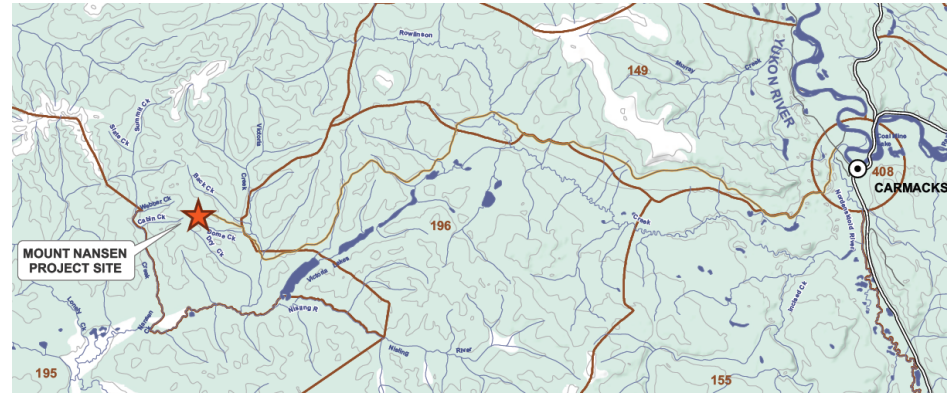
1. Project History
2. Remediation Plan
3. Schedule
4. Job, contracting and training opportunities



- Virtual meeting etiquette.
- Who is the Mount Nansen Remediation LP?
- Padlet – a way to make comments and ask questions.
- We welcome your questions as we go.

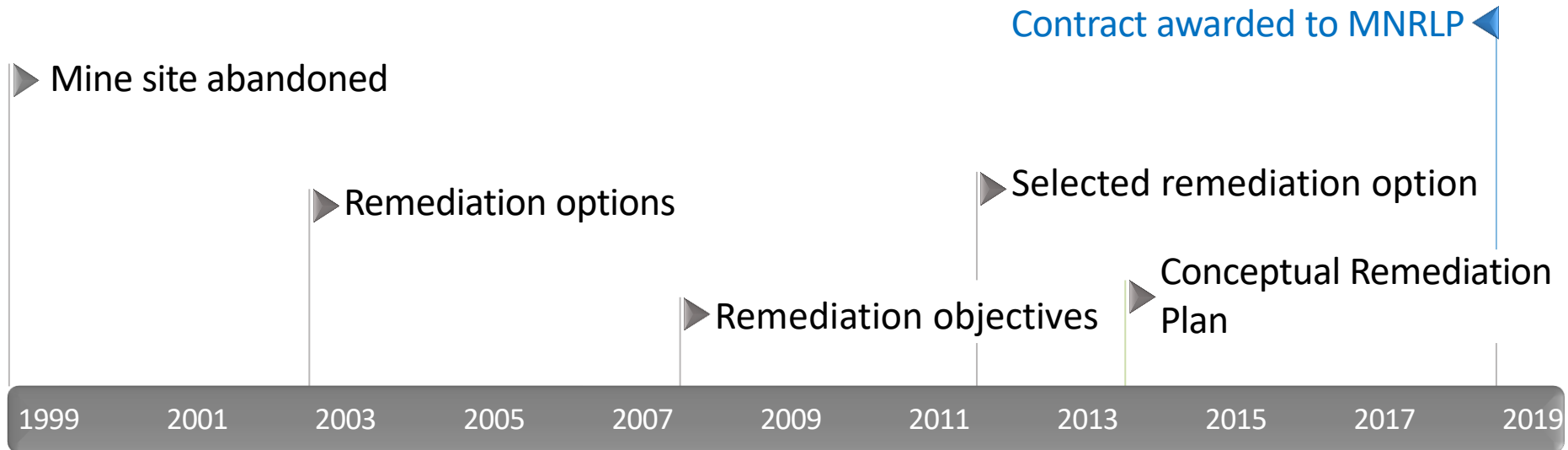
# Mining at Mount Nansen

- Abandoned gold (and silver) mine 60 km west of Carmacks.
- BYG Natural Resources Inc. mined the site 1996-99.
- Shut down due to poor recoveries, tailings dam geotechnical stability issues, and water licence non-compliances.



# Remediation Plan – History

## 20 years: 1999-2019

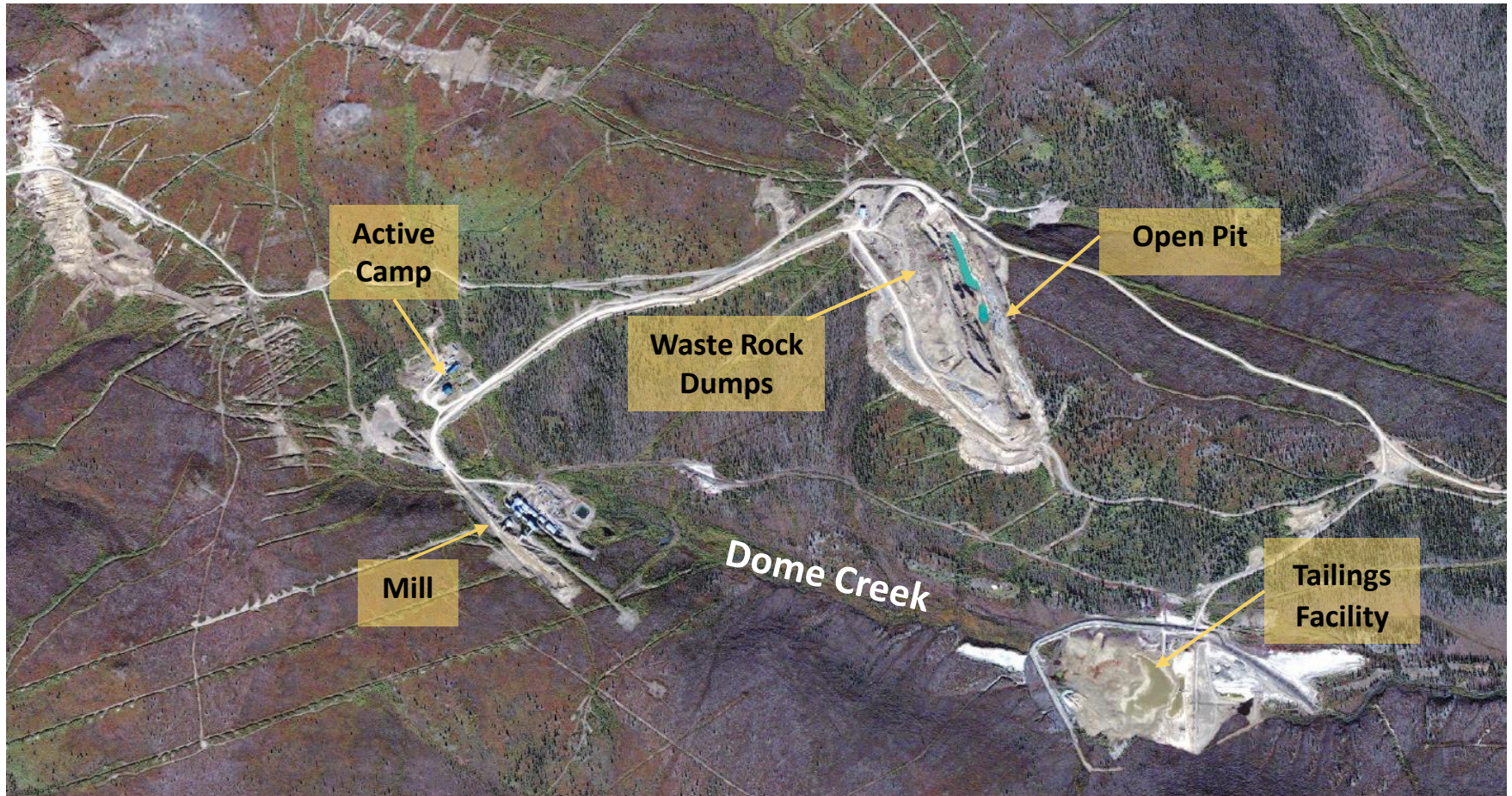


Canada, YG and LSCFN agreed to remediation / closure objectives in 2008:

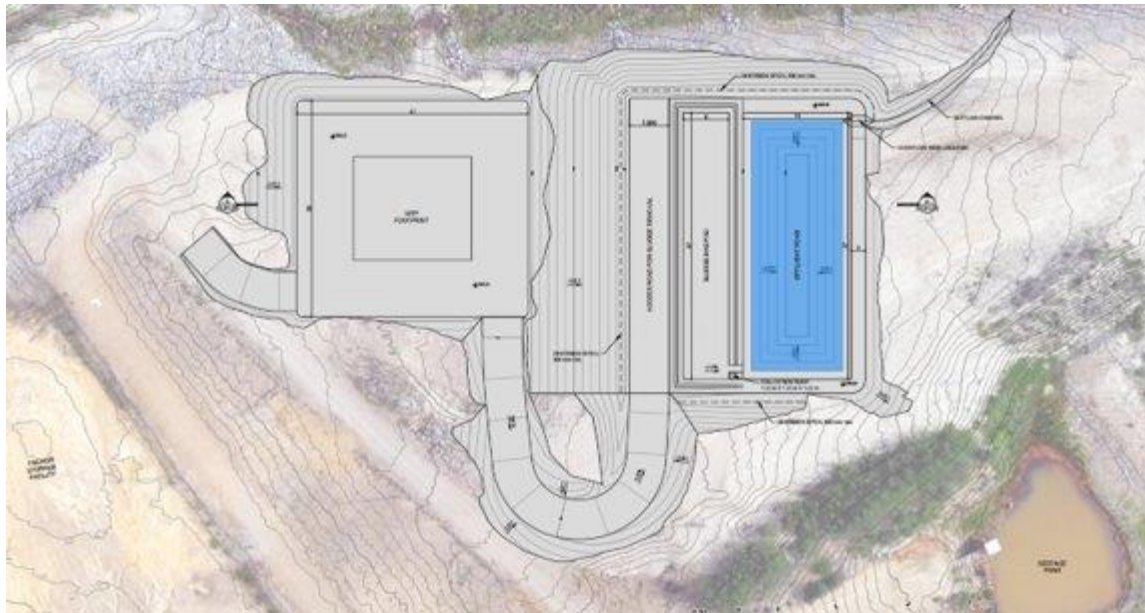
- Protect **human health and safety**.
- Protect the **environment** including land, air, water, fish and wildlife.
- **Return the mine site to an acceptable state of use** that reflects original use where possible.
- Maximize local, Yukon and First Nation **benefits**.
- Reduce government liability and **risk**

# Remediation Plan

- Implementing the remediation option selected by LSCFN, Government of Canada and Yukon Government.

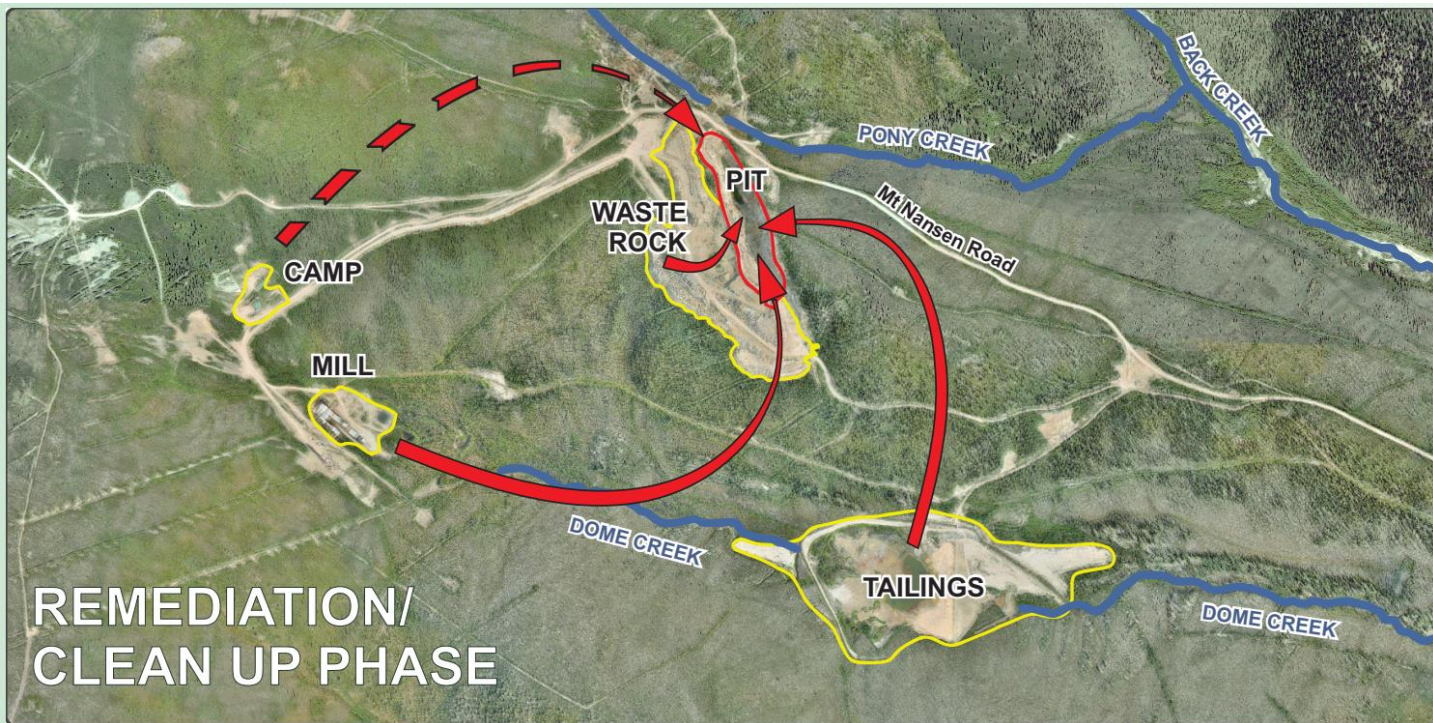


- Water Treatment Plant (WTP)
  - Mitigate effects on downstream receiving environment
  - Constructed during care and maintenance (CM) phase
- WTP to treat water from the Open Pit, Tailings Pond, and Seepage Collection Pond
- Discharge treated water into Dome Creek



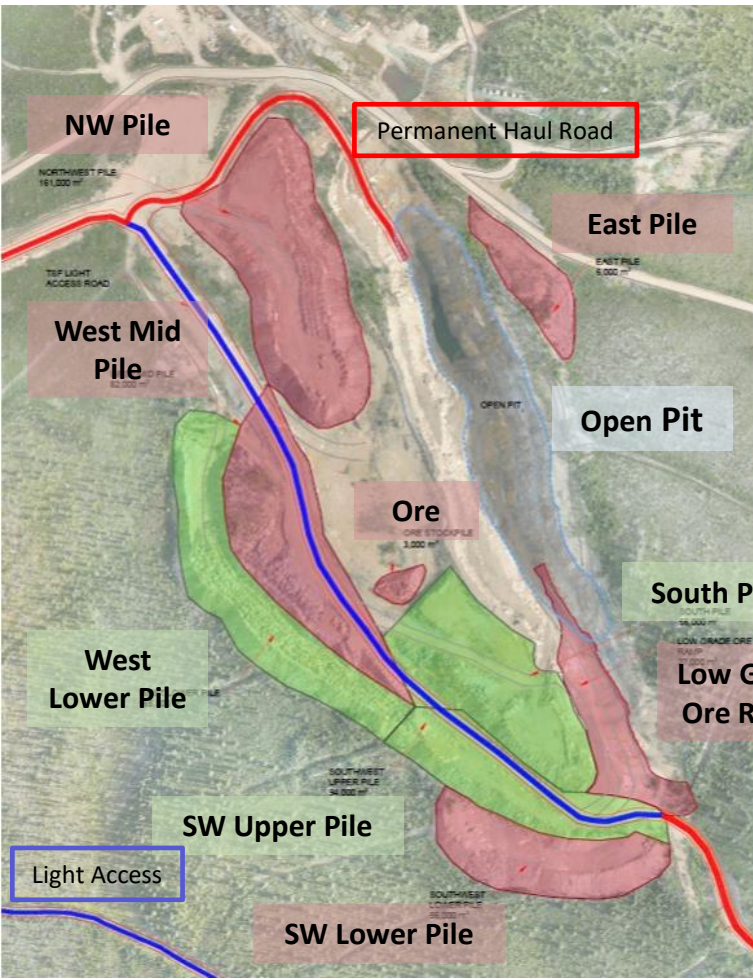


# Remediation Plan



*Mine tailings, waste rock and other waste material will be placed in the open pit and covered with an engineered barrier liner system.*

## ➤ Tailings, Waste Rock and Stockpiled Ore



Backfilled to the Pit Containment Structure

Season 1 & 2

## ➤ Mill Buildings and Other Infrastructure



To be demolished – hazardous waste shipped offsite for disposal; inert material to be buried in Open Pit.

*Season 2 & 3*

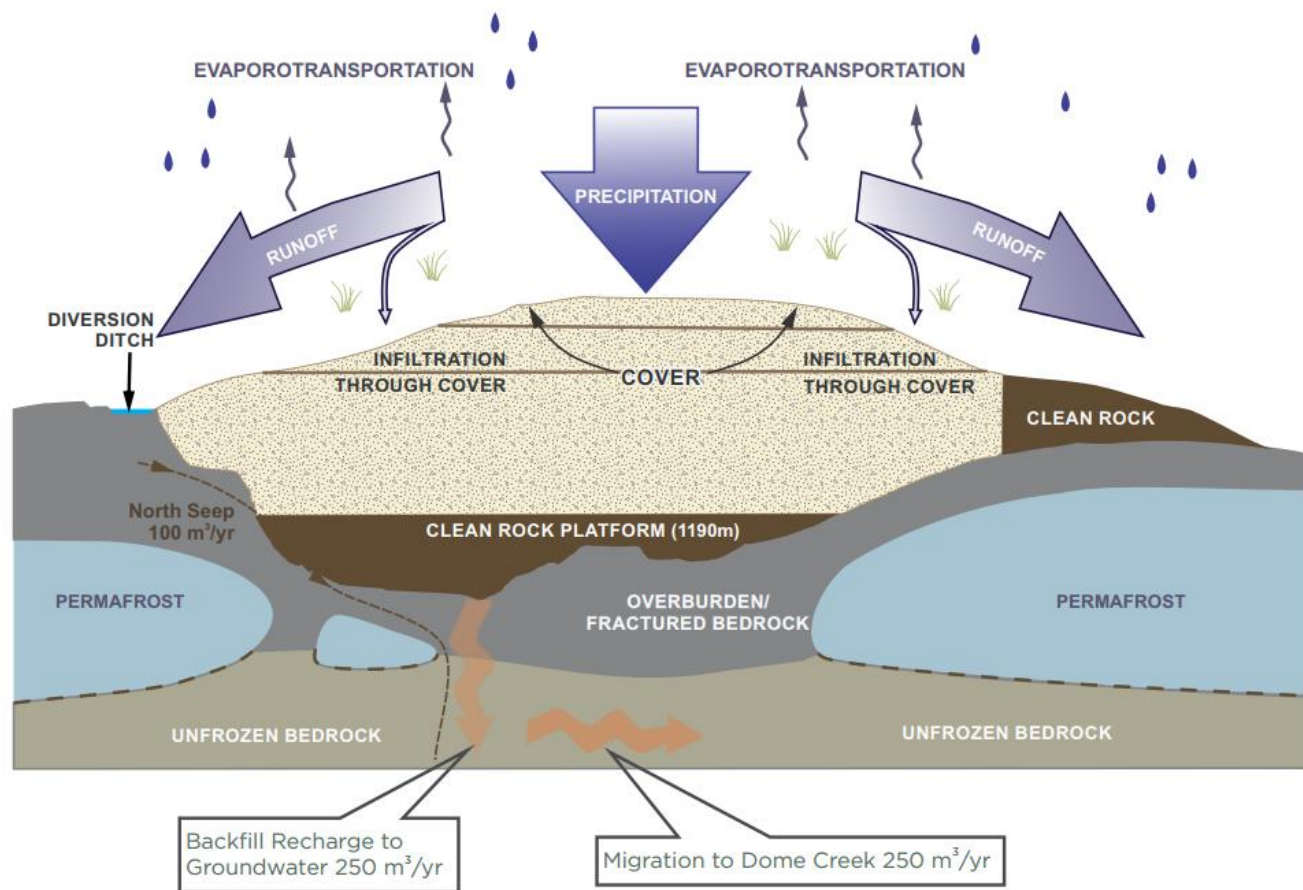


# Remediation Plan

MOUNT NANSEN  
REMEDICATION LP

## Season 3

- Pit Cover
- Dome Creek Valley Reconstruction
- General site regrading, remediation and revegetation

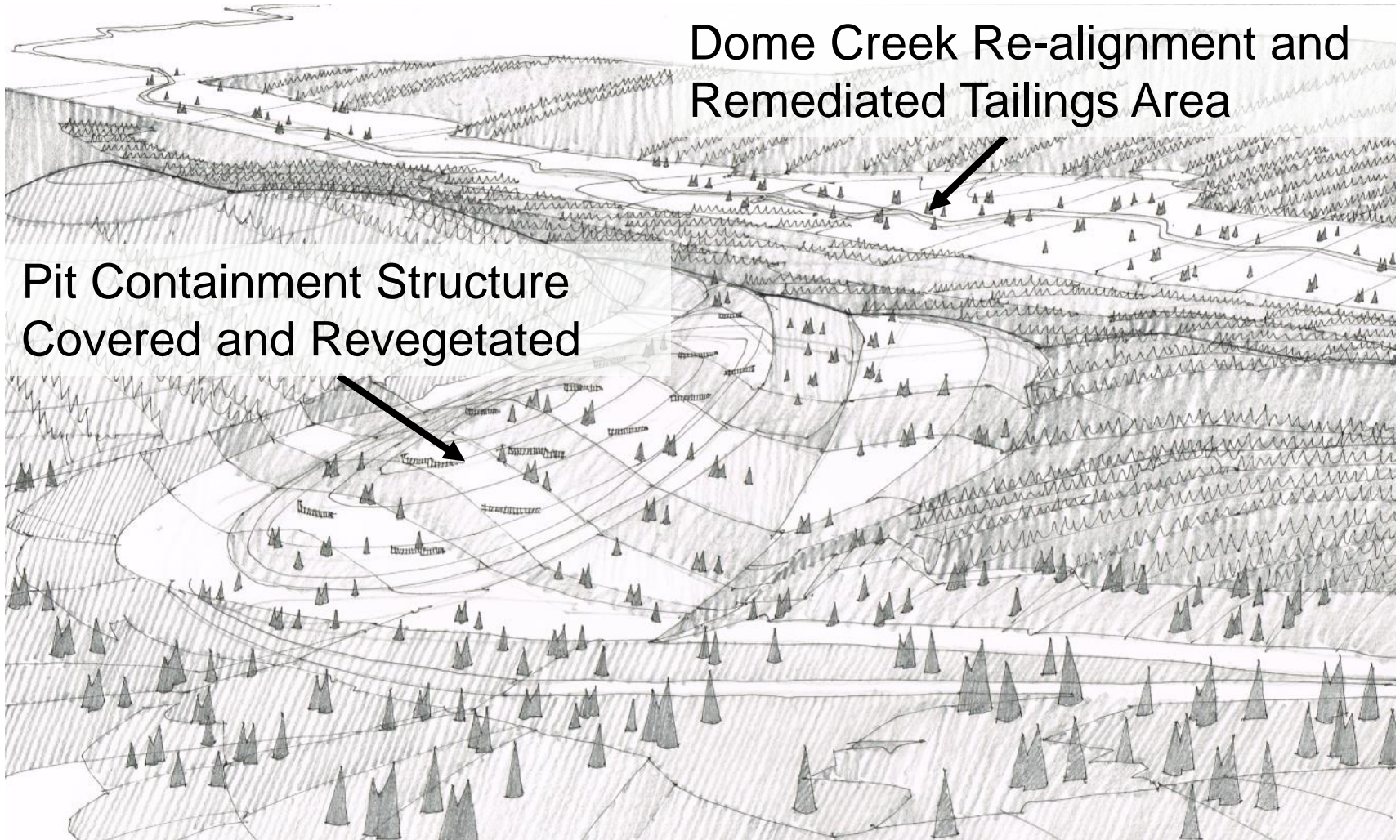


A very small amount of water is expected to flow from the pit backfill into groundwater and then migrate into Dome Creek. Water Quality in Dome Creek will not be significantly altered by this flow. This is one of the reasons why a liner isn't included in the pit design.

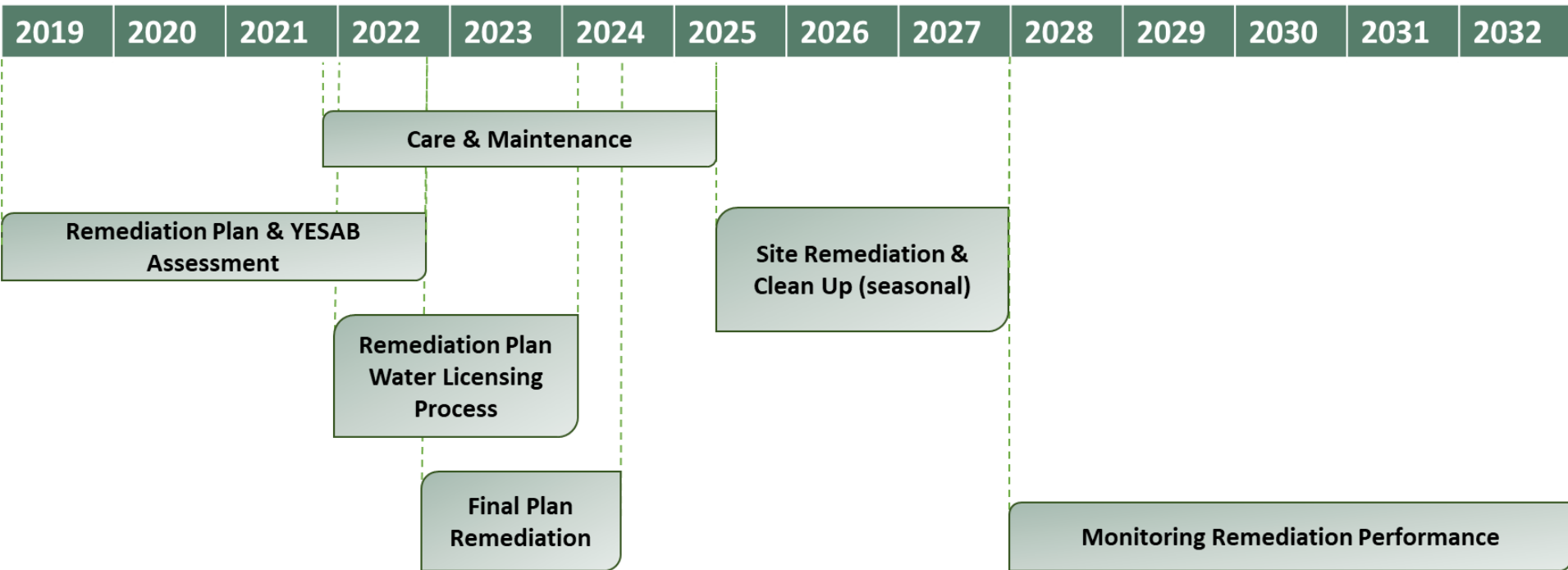
Clean Rock Platform is at least 5m higher than the maximum observed pond water level

# Remediation Plan

## Performance Monitoring and Adaptive Management (2028-2032)



# Project Schedule (2021-2032)



## **Participation and Benefits Agreement with LSCFN**

- Revenue sharing.
- Training, employment and contracting opportunities.
- Involvement in continuing to develop remediation plan.
- Involvement in YESAA and Water Licence applications and processes.
- Ongoing meetings, communication and reporting.



# Opportunities: *Care & Maintenance*

## ➤ Care & Maintenance (Fall 2021-2025)

- **4 year-round, full-time positions** (2 Water Treatment Plant Operators & 2 General Maintenance / Care-taker positions)
- Part-time Environmental Monitor positions
- Contracts (earth-moving, concrete, camp services, fuel supply, waste management, surveying, etc.)



# Opportunities: Seasonal - Remediation



- Remediation (3 seasons: June – September 2025, 2026, & 2027)
  - **25-35 seasonal hires** (including management/supervisor, operators, labourer, and other positions)
  - Part-time Environmental Monitor positions
  - Contracts (earth-moving, camp services, fuel supply, waste management, surveying, etc.)

## Training

- Care & Maintenance
  - Specialized training: Water Treatment Plant Operator
  - Environmental Monitoring, Assessment & Licensing
- Remediation
  - Earth-moving/ Construction Equipment Operation
  - Environmental Monitoring, Assessment & Licensing

How can you find out more?

About the project, about employment, contracting  
or training opportunities?

## **Jillian Chown**

Mount Nansen Project  
Coordinator, Little Salmon  
Carmacks First Nation  
(867) 333-3888

## **Kristina Gardner**

Socio-economic Lead, Mount  
Nansen Remediation LP  
(867) 332-6045  
Email: [info@mnrp.ca](mailto:info@mnrp.ca)  
Web: [www.mnrp.com](http://www.mnrp.com)

1. Refining the Remediation Plan
  2. Developing the submission to the Yukon Environmental and Socio-economic Assessment Board
- How can you participate?
    - Contact Jillian Chown or Kristina Gardner
    - Attend further community meetings
    - Sign up to receive updates
    - Follow us on Facebook: <https://www.facebook.com/mnrlyukon>
    - See website [www.mnrly.ca](http://www.mnrly.ca)

*Together, we can  
clean up and reclaim  
the Mount Nansen  
Mine Site!*

