



MOUNT NANSEN
REMEDATION LP 

Mount Nansen Mine Remediation Project

COMMUNITY MEETING

APRIL 27, 2022

Today's Presentation

1. Project History
2. Schedule
3. Where are we now?
4. Remediation Plan
5. YESAA Project Proposal
6. Job, contracting and training opportunities
7. Questions



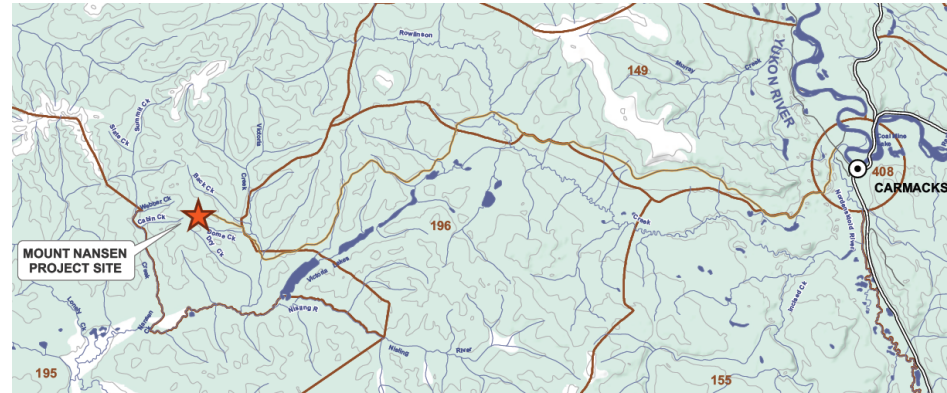
Introduction

- ▶ Who is the Mount Nansen Remediation LP and what is our role at Mount Nansen?
- ▶ Project Phases: Care and Maintenance versus Remediation

Mining at Mount Nansen

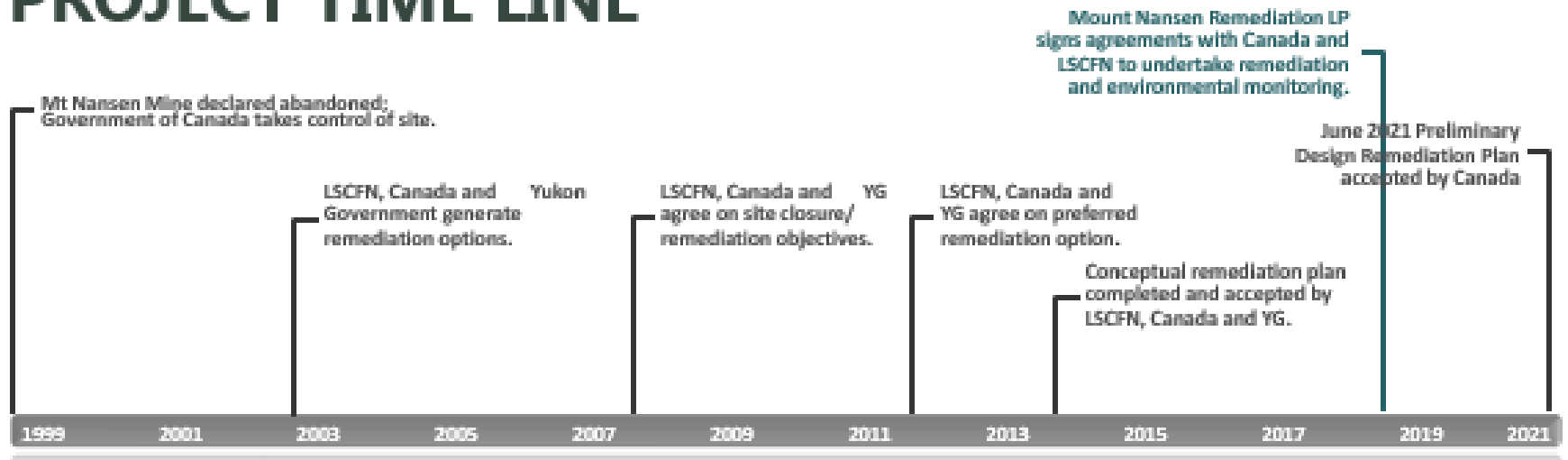


- ▶ Abandoned gold (and silver) mine 60 km west of Carmacks.
- ▶ BYG Natural Resources Inc. mined the site 1996-99.
- ▶ Shut down due to poor recoveries, tailings dam geotechnical stability issues, and water licence non-compliances.



Remediation Plan – History

PROJECT TIME LINE



Where are we now?



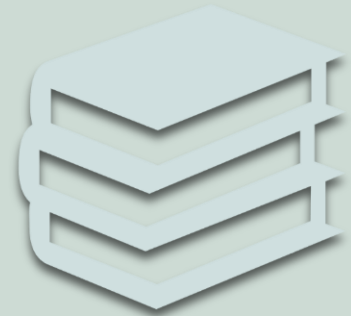
**Care and
Maintenance**



**Water
Treatment
Plant**



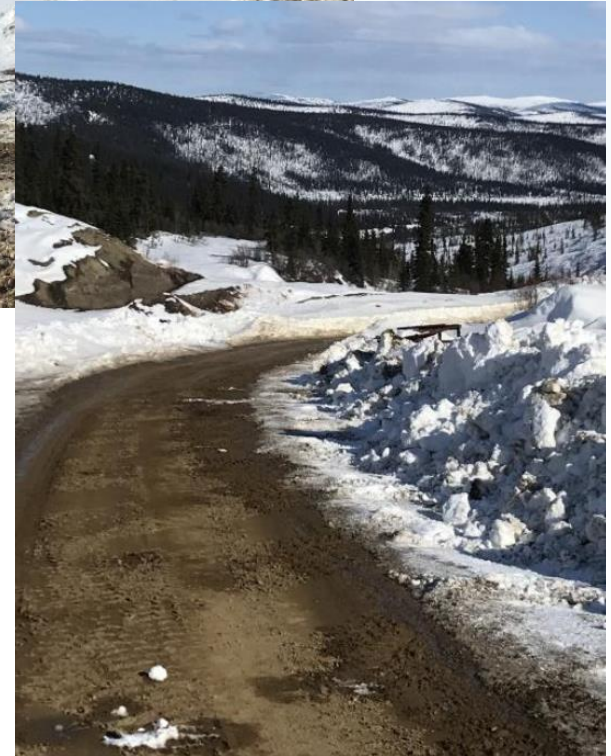
**Engagement
and
Consultation**



**Environmental
and Socio-
economic
Assessment**

Care and Maintenance

- ▶ Road maintenance
- ▶ Daily monitoring
- ▶ Site security
- ▶ Environmental Monitoring
- ▶ Reporting
 - ▶ Water License
 - ▶ Monthly Reports



Water Treatment Plant

MOUNT NANSEN
REMEDICATION LP

- ▶ Care and Maintenance
Water treatment plant is up and running
- ▶ Treating metals including arsenic, iron, manganese, and zinc, along with Total Suspended Solids (TSS), and other metals
- ▶ Cyanide is not being treated because it is not present at elevated levels

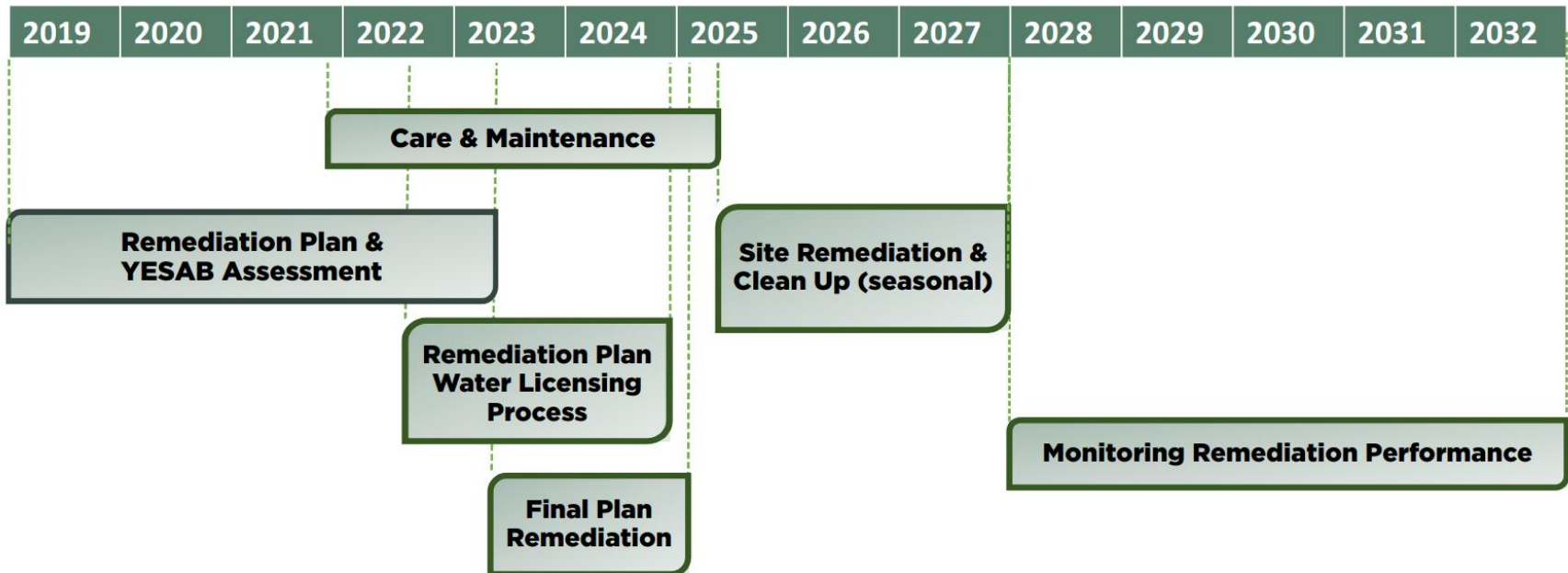


Advancing Design

- ▶ Vegetation trials
- ▶ Soil studies
- ▶ Blackened vegetation studies
- ▶ Tailings handling studies

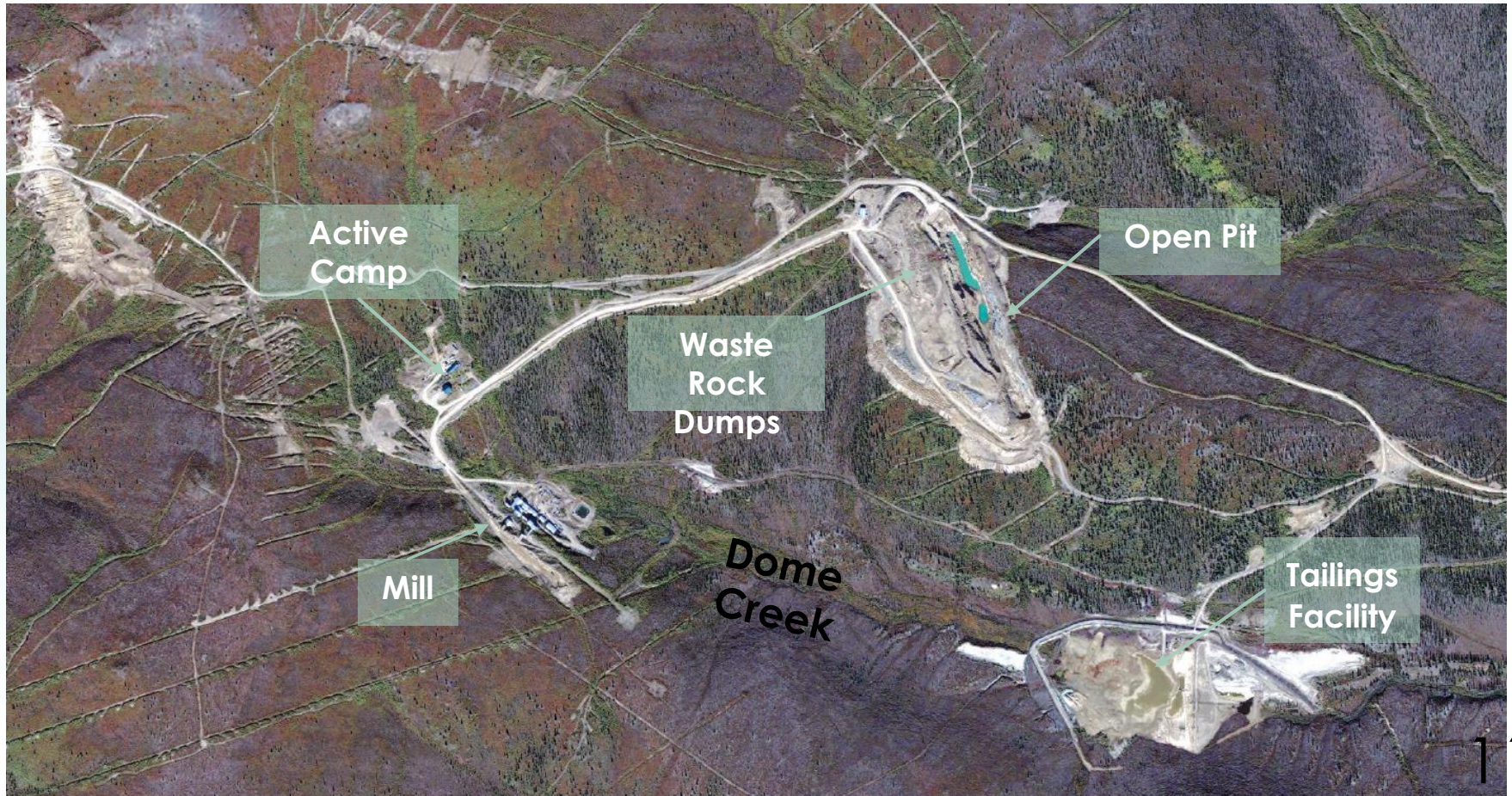


Project Schedule (2022-2032)



Remediation Plan

- Implementing the remediation option selected by LSCFN, Government of Canada and Yukon Government.

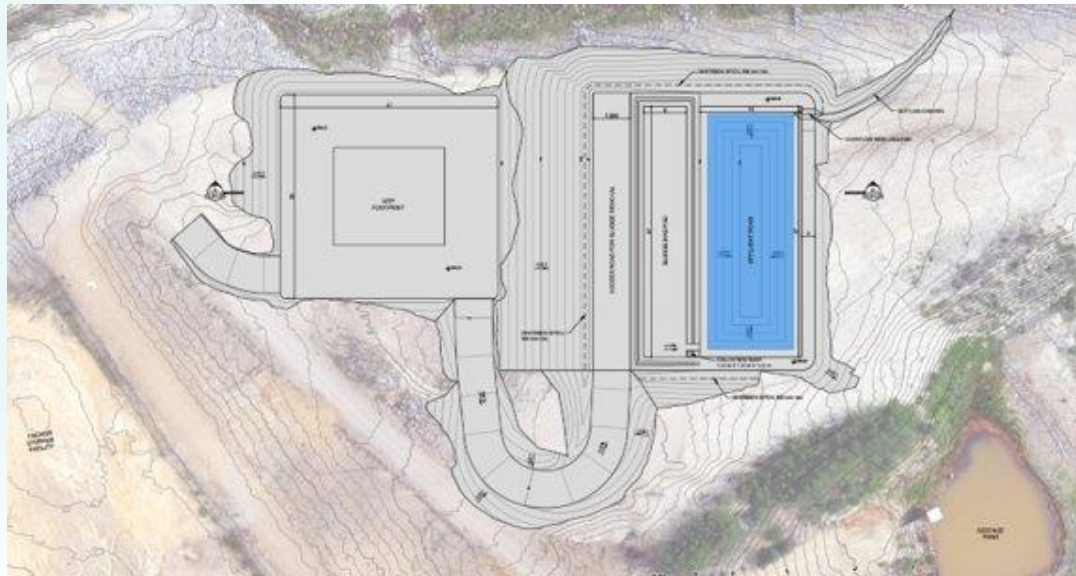


Canada, YG and LSCFN agreed to remediation / closure objectives in 2008:

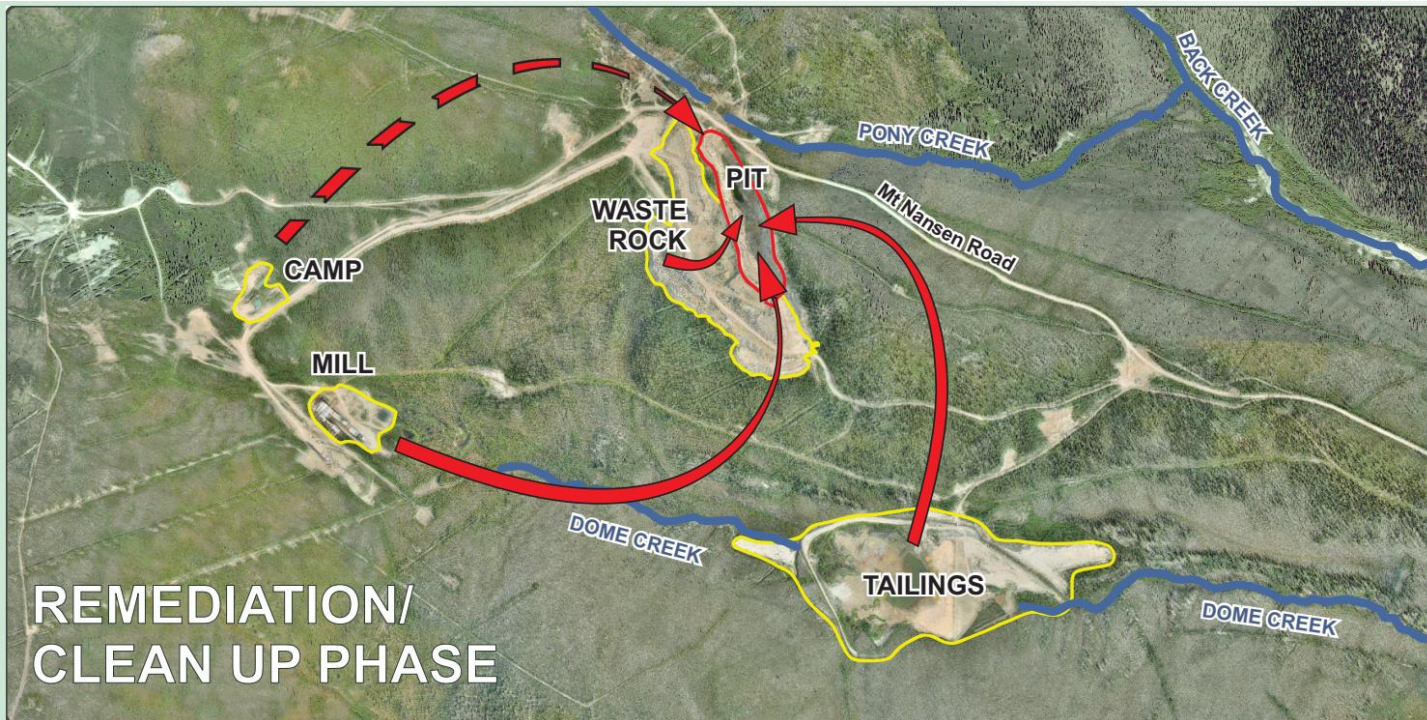
- Protect **human health and safety**.
- Protect the **environment** including land, air, water, fish and wildlife.
- **Return the mine site to an acceptable state of use** that reflects original use where possible.
- Maximize local, Yukon and First Nation **benefits**.
- Reduce government liability and **risk**

Remediation Plan

- ▶ Remediation Water Treatment Plant (WTP)
 - ▶ Mitigate effects on downstream receiving environment
 - ▶ Constructed during care and maintenance (CM) phase
- ▶ WTP to treat water from the Open Pit, Tailings Pond, and Seepage Collection Pond
- ▶ Discharge treated water into Dome Creek



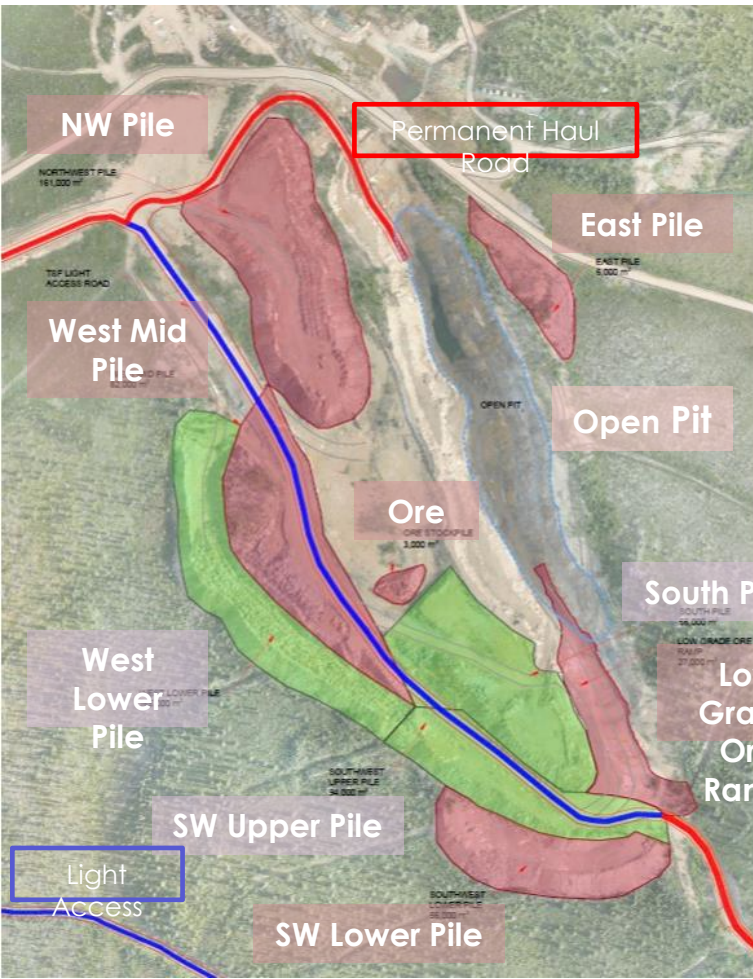
Remediation Plan



Mine tailings, waste rock and other waste material will be placed in the open pit and covered with an engineered barrier liner system.

Remediation Plan

➤ Tailings, Waste Rock and Stockpiled Ore



Backfilled to the Pit Containment Structure

Season 1 & 2

Remediation Plan

➤ Mill Buildings and Other Infrastructure



To be demolished –
hazardous waste shipped
offsite for disposal; inert
material to be buried in
Open Pit.
Season 2 & 3



Remediation Plan

The cover and the ditches will greatly reduce the amount of water that will get into the backfill

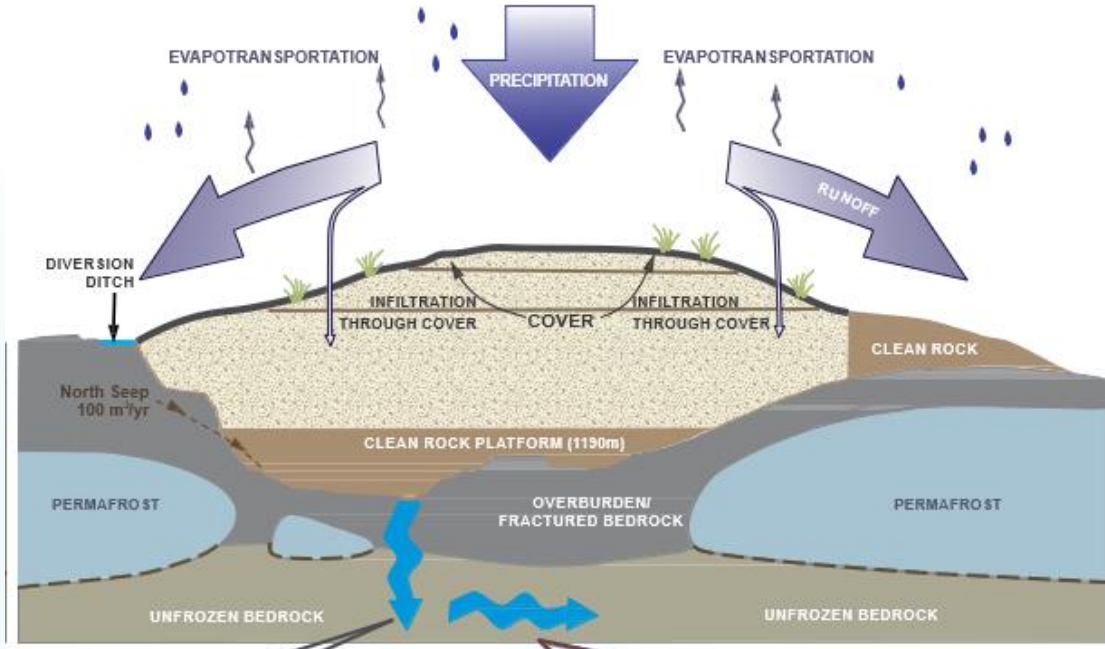
A cover will be placed over the pit, like an umbrella, to shed water away from the pit.

Water that falls outside of the cover that could flow towards the pit will be captured by ditches and carried away from the pit.

We've considered climate change and seasonal variation in our design.

Season 3

- Pit Cover
- Dome Creek Valley Reconstruction
- General site regrading, remediation and revegetation



Backfill Recharge to Groundwater 250 m³/yr

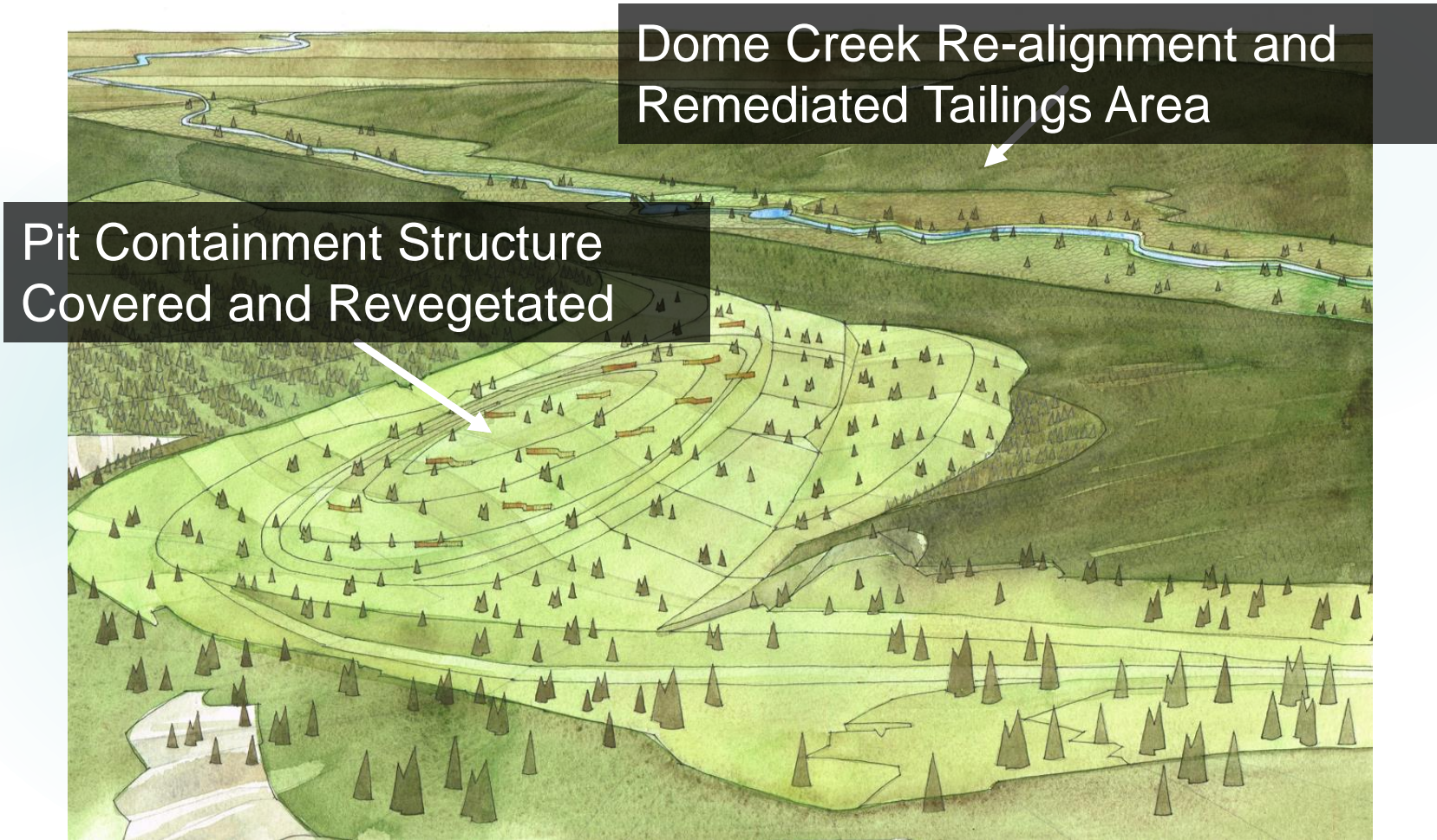
Migration of potentially affected (PCS) water to Dome Creek is 250 m³/yr, which is 0.05% of the annual creek flow.

A very small amount of water is expected to flow from the pit backfill into groundwater and then migrate into Dome Creek. Water Quality in Dome Creek will not be significantly altered by this flow. This is one of the reasons why a liner isn't included in the pit design.

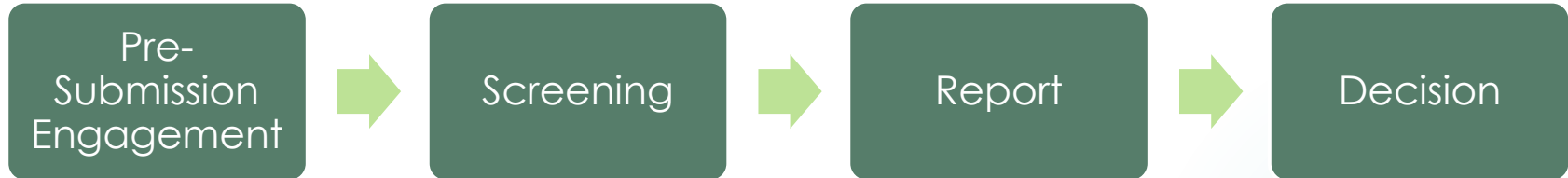
Clean Rock Platform is at least 5m higher than the maximum observed pond water level

Remediation Plan

Performance Monitoring and Adaptive Management (2028-2032)



YESAA Submission



- First step in YESAA submission – high level Project Description
- LSCFN's Dan Yedek'i (Consultation and Accommodation Plan) will continue through the PSE process
- Pre-submission Engagement (PSE) allows collaboration with First Nations and Stakeholders about what's important about the project before the full assessment is completed
- This establishes a Guideline for the project – what is valued about the project to assess, and what information is needed

Participation and Benefits Agreement with LSCFN

- Revenue sharing.
- Training, employment and contracting opportunities.
- Involvement in continuing to develop remediation plan.
- Involvement in YESAA and Water Licence applications and processes.
- Ongoing meetings, communication and reporting.



Opportunities: Care & Maintenance



➤ Care & Maintenance – Until Remediation

- **CM team** – infill for existing positions
 - 2 members of CM team are LSCFN
- Part-time Environmental Monitor positions
- Continued Contracts (fuel supply, waste management, surveying, winter road maintenance, etc.)

Opportunities:

Seasonal - Remediation

- Remediation (3 seasons)
 - **25-35 seasonal hires** (including management/ supervisor, operators, labourer, and other positions)
 - Part-time Environmental Monitor positions
 - Contracts (earth-moving, camp services, fuel supply, waste management, surveying, etc.)

Training

- Care & Maintenance
 - Specialized training: Water Treatment Plant Operator
 - Environmental Monitoring, Assessment & Licensing
- Remediation
 - Earth-moving/ Construction Equipment Operation
 - Environmental Monitoring, Assessment & Licensing

What's Next?

1. Dan Yedek'i (Consultation and Accommodation)
2. Developing the Detailed Remediation Plan
3. Developing the submission to the Yukon Environmental and Socio-economic Assessment Board

➤ **How can you participate?**

- Contact Mike Vance or Kristina Gardner
- Attend other community meetings
- Sign up to receive updates
- Follow us on Facebook:
<https://www.facebook.com/mnr1pyukon>
- See website www.mnr1p.ca

How can you find out more?



Mike Vance

Mount Nansen Project
Coordinator, Little Salmon
Carmacks First Nation

(867) 863-5576 ext. 243

Email:

Michael.vance@lscfn.ca

Kristina Gardner

Socio-economic Lead,
Mount Nansen
Remediation LP

(867) 335-0798

Email: info@mnrp.ca

Web: www.mnrp.com

Building a positive legacy

MOUNT NANSEN
REMEDIATION LP 

*Together, we can
clean up and
reclaim the
Mount Nansen
Mine Site!*

